

Connecting to Remote Desktop Services with Microsoft RD Client on an iPad

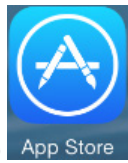
Remote Access

To connect to Remote Desktop Services (RDS) on an iPad:

- Download and install Microsoft Remote Desktop (Microsoft RD Client)
- Set up a shortcut to Latham Remote Desktop Services
- Connect to Remote Desktop Services

How to:

Download and Install Microsoft RD Client



1. On the home screen, tap **App Store**.
2. Search for and then select **Microsoft Remote Desktop**.

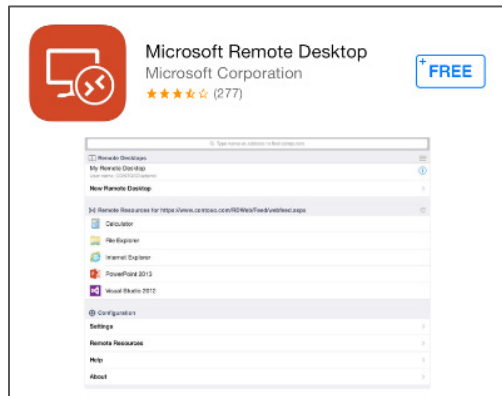


Figure 1: The Microsoft Remote Desktop app appears.

3. Download, and then install the Microsoft Remote Desktop app.

How to:

Set Up a Shortcut to Latham Remote Desktop Services

Perform the procedure in this section to set up a shortcut to RDS on your iPad. This procedure is only necessary the first time you use RDS. After you set up the shortcut, perform the procedure in the *Connect to Remote Desktop Services* section to connect to RDS.

1. If needed, press the **Home** button to return to the home screen.



2. Tap **Safari** to open a Safari browser, type **remote.lw.com** in the address box, and then tap **Go**.

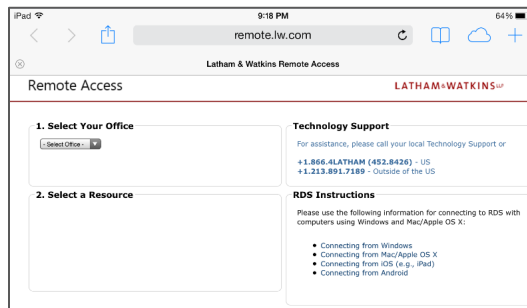


Figure 2: The Latham & Watkins Remote Access home page appears.

3. In the *Select Your Office* box, tap **- Select Office -**, and then tap your home office location.
4. In the *Select a Resource* box, tap **Mobile Users**.

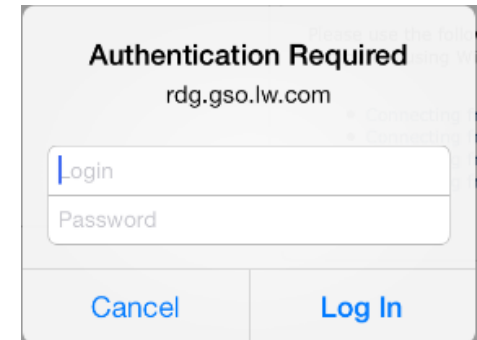


Figure 3: The Authentication Required box may appear.

Note: If you or someone else has logged on to RDS from the same network within an 18-hour period, the Authentication Required box does not appear.

5. If the Authentication Required box appears, proceed to step 6.

or

If the Authentication Required box does not appear, skip to step 9 (following Figure 4).

6. Type your Network ID in the *Login* text box.
7. Type the RSA passcode in the *Password* text box.

or

Copy and paste the passcode from the RSA SecurID app (if installed on the iPad).

Note: Refer to the *Use the RSA SecurID Program on an iPad* section for information about how to use RSA Secure ID.



8. Tap

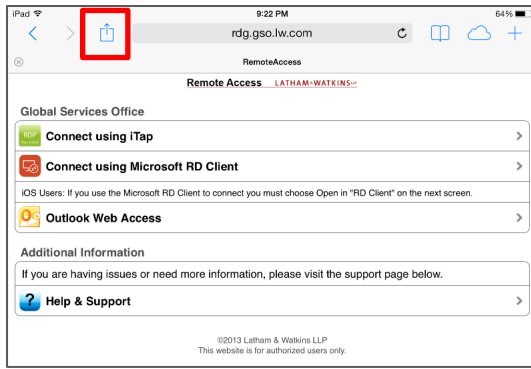


Figure 4: The Remote Access page appears.

9. Tap the **Share**  button.



Figure 5: The Share menu appears.

10. Tap **Add to Home Screen** to add the Latham & Watkins Remote Access shortcut to the home screen.

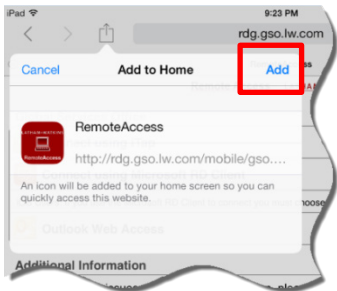
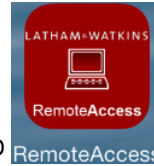


Figure 6: The Add to Home box appears.

11. Tap **Add**.

How to: Connect to Remote Desktop Services



1. On the home screen, tap **RemoteAccess**.

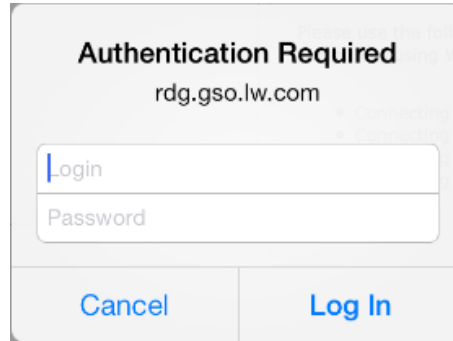


Figure 7: The Authentication Required box may appear.

Note: If you or someone else has logged on to RDS from the same network within an 18-hour period, the Authentication Required box does not appear.

2. If the Authentication Required box appears, proceed to step 3.

or

If the Authentication Required box does not appear, skip to step 6 (following Figure 8).

3. Type your Network ID in the *Login* text box.

4. Type the RSA passcode in the *Password* text box.

or

Copy and paste the passcode from the RSA SecurID app (if installed on the iPad).

Note: Refer to the [Use the RSA SecurID Program on an iPad](#) section for information about how to use RSA Secure ID.

5. Tap **Log In**.

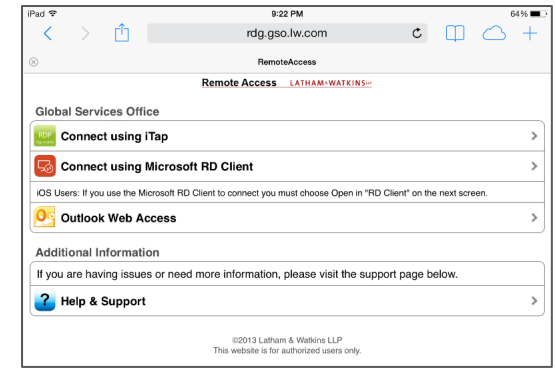


Figure 8: The Remote Access page appears.

Tip: Rotate the iPad to landscape orientation before you log on, in order to utilize the entire screen for Remote Desktop.

6. Tap **Connect using Microsoft RD Client**.



Figure 9: The Logon page appears.

7. Tap **Open in "RD Client"**.

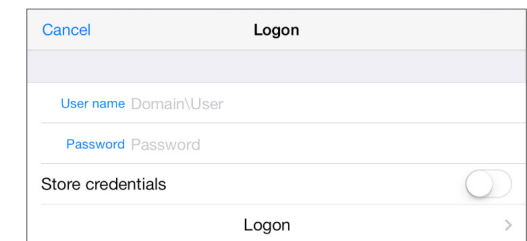


Figure 10: The Logon dialog box appears.

8. In the *User name* text box, type your network ID.
Example: ksmith

- In the *Password* text box, type your network password.

IMPORTANT

Due to security issues, do not turn on the *Store credentials* feature.

- Tap **Logon**.

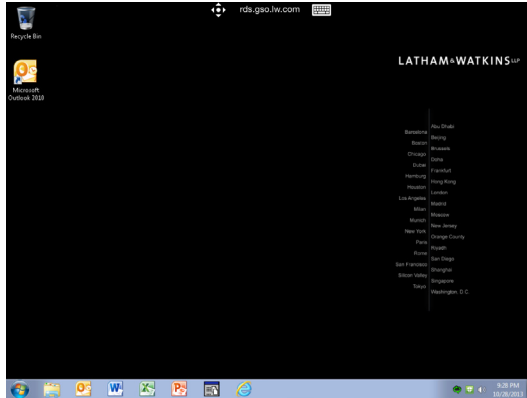




Figure 11: The Remote Desktop appears.

Tip: Tap  to use the keyboard. Tap  to zoom and pan.

How to:

Disconnect From RDS

On the Remote Desktop, tap **Start > Log off**.

How to:
Use the RSA SecurID Program on an iPad


- Press the **Home**  button to return to the home screen.



- Tap



Figure 12: The RSA SecurID page appears.

- Generate a passcode as usual.
- Press the **Copy**  button.



- The first time you log on, tap
or



After the first time you log on, tap **RemoteAccess**.

The **Authentication Required** box appears.

- Press the **password** box until the magnifying glass appears.



Figure 13: The magnifying glass appears.

- Remove your finger from the screen.

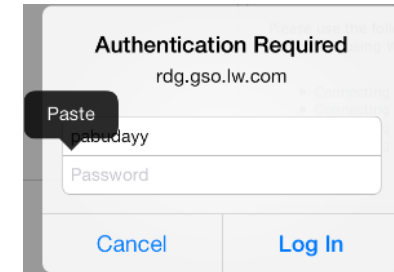


Figure 14: The Paste button appears.

- Tap **Paste**.

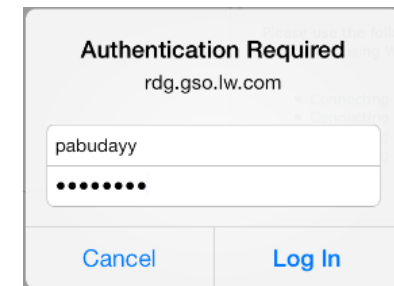


Figure 15: The RSA passcode appears in the Password box.